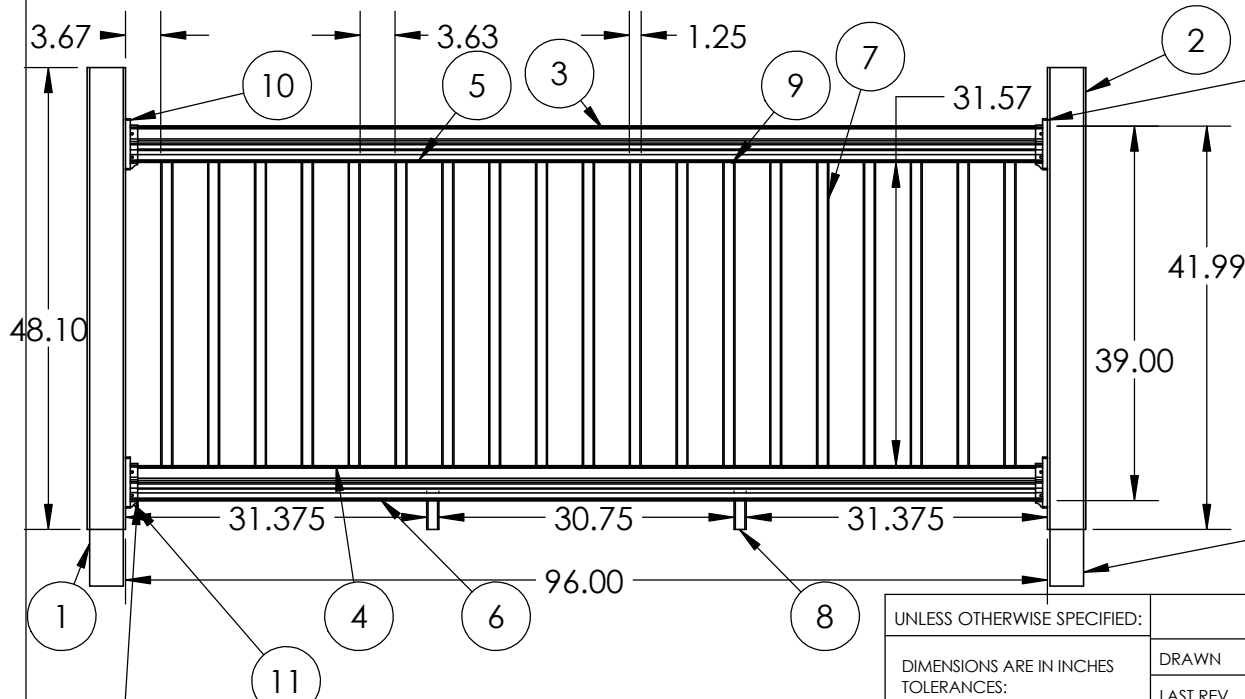




*See Sheet 2 of 2 for optional baluster and connection details.

ITEM NO.	PART NUMBER	DESCRIPTION	QTY.
1	4x4 Post	Treated Wood Post	2
2	IN105101 Post Cover	WPC Post Sleeve	2
3	IN107003	Architectural WPC Top Rail (Heavy)	1
4	IN107003	Architectural WPC Bottom Rail (Heavy)	1
5	IN107103	Reinforcing WPC Top Rail	1
6	IN107103	Reinforcing WPC Bottom Rail	1
7	IN105401	Hollow WPC Baluster	20
8	IN105401	Hollow WPC Foot Piece	2
9	IN134401	Baluster Connector	40
10	IN135001	Architectural WPC Top Rail Connector	2
11	IN135001	Architectural WPC Bottom Rail Connector	2



*Bracket to Post Connection - Use (6) H Style Screws
 *Top Rail to Bracket Connection - Use (4) G Style Screws

Notes:
 *This rail assembly meets 2012 OBC requirements for guards within dwelling units & exterior guards serving not more than 2 dwelling units.
 *Post installation per SB-7 requirements (OBC)
 *Component verification & testing per ATI report C8061.01-119-19
 *Balusters/rails to be installed to have no play between baluster/rail.
 *Install complete railing system according to installation instructions.

Structural 4x4 #1 SYP Ground Contact Treated Post (ESR-2240 or AWPA Std U1, UC 4A)

*Bracket to Post Connection - Use (6) H Style Screws
 *Bottom Rail to Bracket Connection - Use (4) G Style Screws

Copyright 2014, Universal Forest Products, Inc.

PROPRIETARY AND CONFIDENTIAL

THE INFORMATION CONTAINED IN THIS DRAWING IS THE SOLE PROPERTY OF UFP. ANY REPRODUCTION IN PART OR AS A WHOLE WITHOUT THE WRITTEN PERMISSION OF UFP IS PROHIBITED.

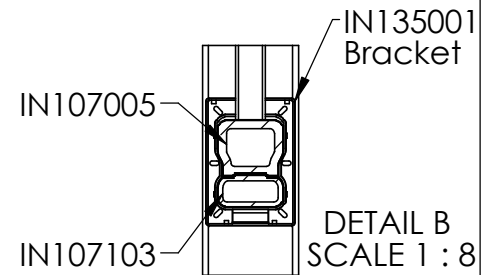
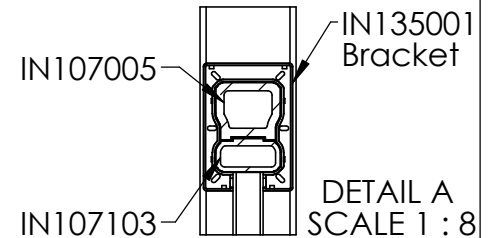
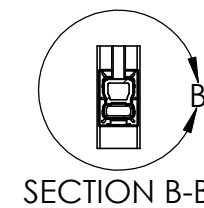
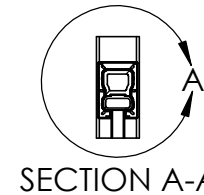
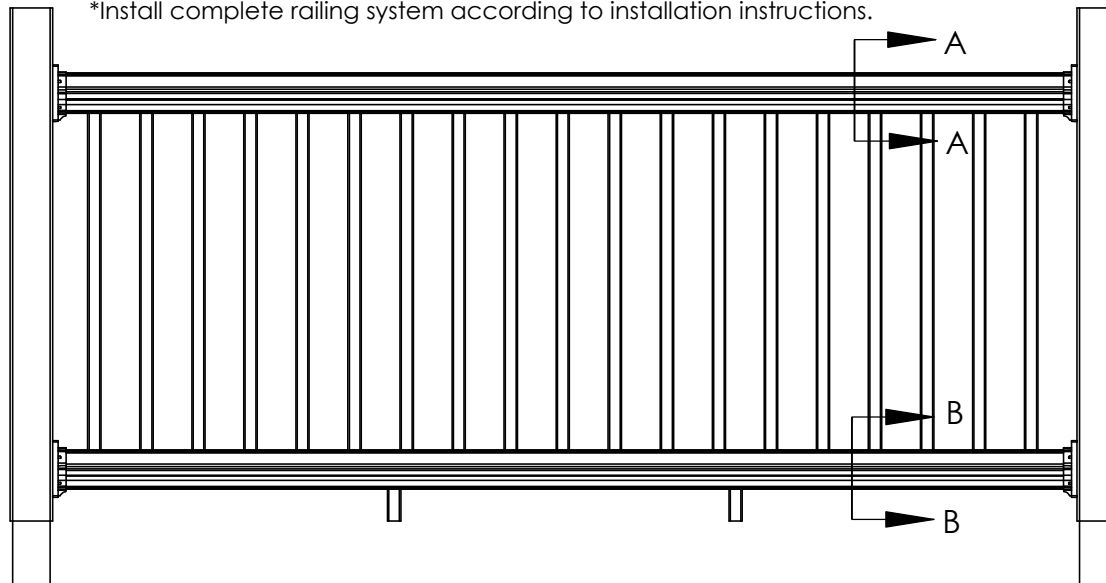
UNLESS OTHERWISE SPECIFIED:		NAME	DATE	DRAWING	
DIMENSIONS ARE IN INCHES		DRAWN	NDA		3/28/2014
TOLERANCES:		LAST REV.	1		3/28/2014
FRACTIONAL ±		ENG APPR.			
ANGULAR: MACH ± BEND ±		MFG APPR.			
TWO PLACE DECIMAL ±					
THREE PLACE DECIMAL ±					
INTERPRET GEOMETRIC TOLERANCING PER:					
MATERIAL				TITLE: 8' Level Architectural (Heavy)	
Wood/Plastic Composite					
FINISH				SIZE	
DO NOT SCALE DRAWING		UFP. WWW.UFPI.com		Job No. 69301	
				Dwg No. IN147301	
				REV	
				SCALE: 1:20	
				SHEET 1 OF 2	



*See Sheet 1 of 2 for part descriptions.

Baluster Options			
Baluster Name	Part No.	Connector Part No.	Fastener Callout and (qty.)
Baroque	110.2	Mech.	E (4)
Traditional	111.2	Mech.	F (4)
Classic	104.2	107.1 or 107.2	E (2)
Arc	112.2	Mech.	E (4)
Estate	114.2	108.1	E (2)

Notes:
 *Connect 2 part rails together with one [H] connect 2 feet from each 4 x 4 post.
 *Install complete railing system according to installation instructions.



Connections:

- [E] - 1-1/2" long x 0.157" major dia. 304 stainless steel screw (bugle head) 9 threads per inch.
- [F] - 1-1/2" long x 0.165" major dia. 304 stainless steel screw (bugle head) 15 threads per inch.
- [G] - #10-16 x 3/4" (0.130" minor diameter) square-drive, pan-head, stainless steel screws.
- [H] - #8-15 x 2" (0.113" minor diameter) square-drive, pan-head, stainless steel screws.

Copyright 2014, Universal Forest Products, Inc.

PROPRIETARY AND CONFIDENTIAL

THE INFORMATION CONTAINED IN THIS DRAWING IS THE SOLE PROPERTY OF UFP. ANY REPRODUCTION IN PART OR AS A WHOLE WITHOUT THE WRITTEN PERMISSION OF UFP IS PROHIBITED.

UNLESS OTHERWISE SPECIFIED:		NAME	DATE
DIMENSIONS ARE IN INCHES		DRAWN	NDA 3/28/2014
TOLERANCES:		LAST REV.	1 3/28/2014
FRACTIONAL ±		ENG APPR.	
ANGULAR: MACH ± BEND ±		MFG APPR.	
TWO PLACE DECIMAL ±			
THREE PLACE DECIMAL ±			
INTERPRET GEOMETRIC TOLERANCING PER:			
MATERIAL		UFP.	
Wood/Plastic Composite		WWW.UFPI.com	
FINISH			
DO NOT SCALE DRAWING			

DRAWING

TITLE: **8' Level Architectural (Heavy)**

SIZE	Job No.	69301	REV
A	Dwg No.	IN147301	
SCALE: 1:18		SHEET 2 OF 2	